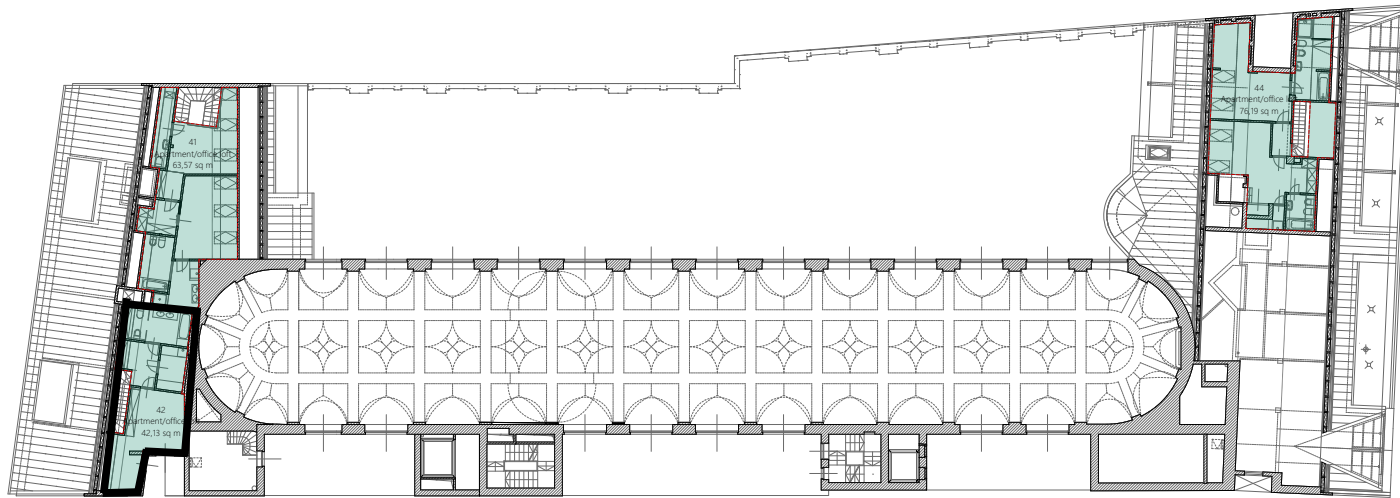


| 4 - 1ST ATTIC FLOOR - COMBINED RENTABLE AREA | | |
|--|------------------|---------------|
| ID | Room name | Measured area |
| 4/6.01 | Office Loft | 3.85 sq m |
| 39 | Office Loft | 3.65 sq m |
| 41 | Apartment/office | 122.83 sq m |
| 42 | Apartment/office | 76.61 sq m |
| 43 | T-COM OPERATION | 22.59 sq m |
| 44 | Apartment/office | 150.00 sq m |
| 45 | Apartment/office | 151.70 sq m |

| 4 - 1ST ATTIC FLOOR - COMBINED OTHER MEASURED AREA | | |
|--|-----------|---------------|
| ID | Room name | Measured area |
| 4/01C | Lobby | 12.87 sq m |
| 4/01O | Operation | 17.08 sq m |
| 4/02C | Staircase | 7.38 sq m |
| 4/02O | Operation | 25.73 sq m |
| 4/03C | Lobby | 4.54 sq m |
| 4/04C | Staircase | 4.84 sq m |
| 4/05C | Lobby | 4.48 sq m |
| 4/06C | Staircase | 30.65 sq m |
| 4/07C | Lobby | 13.85 sq m |
| 5/03O | Operation | 1.73 sq m |



| 4.5 - 1ST ATTIC LOFT - COMBINED RENTABLE AREA | | |
|---|-----------------------|---------------|
| ID | Room name | Measured area |
| 41 | Apartment/office loft | 63.37 sq m |
| 42 | Apartment/office loft | 42.13 sq m |
| 44 | Apartment/office loft | 76.19 sq m |

| 4.5 - 1ST ATTIC LOFT - COMBINED OTHER MEASURED AREA | | |
|---|-----------|---------------|
| ID | Room name | Measured area |